



Year 8 Options Evening

January 2021

St Martins Options Information 2021

It is vital at this stage to gain as much information as you can prior to making some very important decisions regarding your future learning pathway.

Please use the information in this presentation to gain an understanding of the subjects offered at St Martin's School.

Students will then make their final option choices via a Google form which will be emailed to them.



Options choices

- There are core GCSE subjects that must be followed in Maths, English and Science. In order to meet the legal requirements of the National Curriculum, PE, Ethics/ PSE Welsh and Skills Challenges are studied by all students.
- This leaves three optional subjects for students to select. The School offers GCSE subjects in the main (assessed mainly by examination) with some vocational subjects (assessed mainly by assignments).

KS4 CURRICULUM

COMPULSORY

OPTIONS

MATHS

ENGLISH

SCIENCE

COMPULSORY

OPT
1

OPT
2

OPT
3

Double
Science

(Separate
Science)

Welsh

PRE

PE

Skills
Challenge



What should I do if I don't know what to pick?



What type of job interests you?



What qualifications do you need for this job?



What level is this qualification?



Do you need specific subjects at Level 1 or 2?



Select your subjects using the information in this presentation.

What subjects am I good at?

This is the key indicator for likely success in a subject. Check back on interim report data and speak to their teachers.

Speak to staff and parents about the subjects you may need for their future?

All students intending to study an academic course at University should make sure they have chosen the right subjects for their chosen pathway

What subjects do you enjoy most?

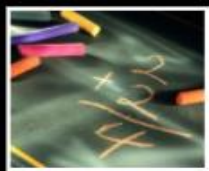
*This is important as enjoyment and examination success often go hand in hand. Remember this is not the same as liking your current teacher.
What are your skills and interests?*

Often these can help support students' subjects within school.

Options Process Timeline

Time	Event
Week Commencing 18 th January 2021	Options presentation on the options process to students
1 st February 2021	Option Choices form emailed to Students
1 st March 2021	Final date for Option Choices form to be submitted.
8 th March – 12 th March 2021	Student options review meetings for students in school
31 st March 2021	Confirmation of Options - letter emailed via SIMS parent app

Maths



Qualification

GCSE (WJEC)

Level

1 & 2

The course is based on the attainment targets and programmes of study of the National Curriculum, and includes work on number, algebra, shape, space, measures and handling data.

It aims to develop pupils' mathematical knowledge through a range of enjoyable, motivating and challenging activities. There will be no coursework.

Teaching will involve exposition, discussion, practical work, problem solving and investigative work

For Further Information Contact:
Mrs L. Foreman



ASSESSMENT

MATHS

Paper 1 (non Calculator) 50%
Paper 2 (calculator) 50%

NUMERACY

Paper 1 (Non Calculator) 50%
Paper 2 (calculator) 50%

LEARNING PATHWAY

Maths is an essential qualification for employment; it provides application to a wide range of subjects for further study at A-Level; most notable Maths and Science.

Double Award Science



Qualification

GCSE (WJEC)

Level

1 & 2

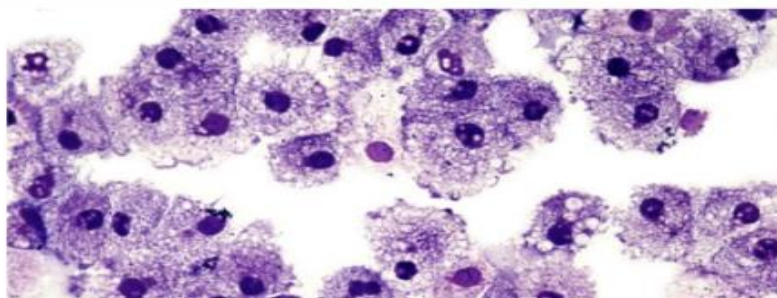
All pupils have to study Science as part of the National Curriculum. The context of the course will ensure a balanced contribution from each of Biology (B), Chemistry (C) and Physics (P).

Most students will follow double award science, which is a three-year course. Therefore, two GCSEs will be awarded for this subject.

The aims will be for pupils to:

- * develop a critical approach to scientific evidence and methods;
- * acquire and apply skills, knowledge and understanding of how science works and its essential role in society;
- * appreciate the unique contribution of science to the objective understanding of the material world;

Pupils in Year 9 will start on Key Stage 4 of the National Curriculum. Whilst Assessment is 90% written exams and 10% practical exam.



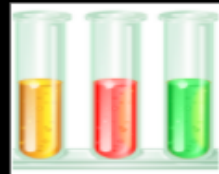
ASSESSMENT*

UNIT B1 (15%)Y10 Examination
UNIT C1 (15%)Y10 Examination
UNIT P1 (15%)Y10 Examination
UNIT B2 (15%)Y11 Examination
UNIT C2 (15%)Y11 Examination
UNIT P2 (15%)Y11 Examination
UNIT 7 PRACTICAL ASSESSMENT (10%)

LEARNING PATHWAY

The courses are designed as a worthwhile educational experience for all pupils whether or not they go on to study Science at a higher level.

For Further Information Contact:
Mr M. Castle



All pupils must study Science as part of the National Curriculum. The context of the course will ensure a balanced contribution from each of Biology (B), Chemistry (C) and Physics (P).

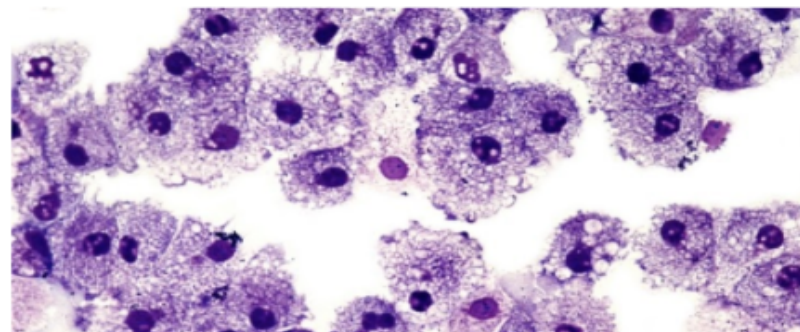
The applied science course is a course designed for learners who learn best practically and who may not reach their full potential in external examinations. This course is delivered in an engaging applied context, with less examinations and more emphasis on practical task-based assessments.

The aims will be for pupils to:

- * develop a critical approach to scientific evidence and methods;
- * acquire and apply skills, knowledge and understanding of how science works and its essential role in society;
- * appreciate the unique contribution of science to the objective understanding of the material world;

Pupils in Year 9 will start on Key Stage 4 of the National Curriculum. Whilst Assessment is 70% written exams and 30% practical exam and tasks.

For Further Information Contact:
Mr M. Castle



ASSESSMENT*

UNIT 1 (22.5%)Y10 Examination

UNIT 2 (22.5%)Y10 Examination

UNIT 3 (25%)Y11 Examination

UNIT 4 (20%)Y11 Practical task based assessment

UNIT 5 (10%)Y11 Practical assessment

LEARNING PATHWAY

The courses are designed as a worthwhile educational experience for all pupils whether they go on to study Science at a higher level.



Separate Science

Qualification

GCSE (WJEC)

Level

1 & 2

Some students will be given the opportunity to study Separate Sciences, courses leading to a GCSE certificate in each of the three Sciences – Biology, Chemistry and Physics.

This course is an accelerated course, and the top 32 students are given the opportunity.

These students will study units B1, C1 and P1 in Year 9 and 10 and will sit an external examination towards the end of Year 10. They will then complete a practical assessment in January/ February and study units B2, C2 and P2 and sit an external examination in the June of the following year. The aggregation of marks achieved from these units leads to the award of GCSE certificates in Biology, Chemistry and Physics.

For Further Information Contact:

Mr M. Castle (Chemistry)

Mrs K. Gibson (Biology)

Mrs R. Turner (Physics)



ASSESSMENT

Biology

Y10 Exam (B1)—45%; Y11 Exam (B2)—45%
Practical Assessment —10%

Chemistry

Y10 Exam (C1)—45%; Y11 Exam (C2)—45%
Practical Assessment —10%

Physics

Y10 Exam (P1)—45%; Y11 Exam (P2)—45%
Practical Assessment —10%

LEARNING PATHWAY

The Three Science lead into an informed study of Biology, Chemistry and Physics at A-Level. A focus on Science prepares students for Medical and Veterinary vocations.



Electronics

Qualification

GCSE (WJEC)

Level

1 & 2

The course is designed for pupils who have an interest in the broad field of electronics and computer control. Electronics is a fast growing technology and so electronic engineers are in great demand within both the hardware and software industries.

The course is divided into three modules as shown below.

- E1 - Discovering Electronics
- E2 - Applications of Electronics
- E3 - Electronic System Project

It is important in an electronics course that pupils should be able to develop practical skills as well as to understand the theory behind electronic circuits.

A successful electronic engineer must have the ability to problem solve and design, construct and programme electronic circuits.

For Further Information Contact:



ASSESSMENT

UNIT E1 (40%) Y10 Examination

UNIT E2 (40%) Y11 Examination

UNIT E3 (20%) Y11 Assessment

A Practical Task

LEARNING PATHWAY

This course will lead into A-Level Engineering Design (Mechatronics) as well as an essential qualification for those who wish to pursue a career in the Engineering & Technology Industries.

Mr D. Cole

Hospitality Catering



Qualification

Vocational Award

Level

1 & 2

This course is designed to develop candidates' skill in the production of food dishes, and to introduce them to the Catering Industry. It will concentrate on the main aspects of food production and food service.

Weekly practical assignments will require
a) Individual work to develop self-discipline.
b) Group work to develop cooperation within a team.

Skills will be developed within practical assignments, therefore it is essential to participate in each practical session. All pupils will be expected to wear a white apron and hat during practical sessions. These can be purchased from the school

For Further Information Contact:
Mrs F. Shopland



ASSESSMENT

UNIT 1

Y11 Exam

90 min written exam, long and short responses

UNIT 2

Practical assessment

LEARNING PATHWAY

This course will lead into level 3 Hospitality in year 12 as well as work based placements. The course also provides skills to complement a wide variety of general subjects.



Health & Social Care

Qualification

GCSE

Level

1 & 2

This course is designed to give candidates a full understanding of the Health & Social Care Sector.

The units are designed to provide students with an understanding of the skills necessary to work in a range of occupations.

For Further Information Contact:

Mr M Castle



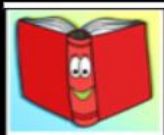
ASSESSMENT

**UNIT 1 (50%) - Y10 Examination
Human Growth and Development**

**UNIT 2 (50%) - Y11 Assessment
Promoting and Maintaining
Health and Wellbeing**

LEARNING PATHWAY

This course will lead into a variety of Health & Social vocations and entry to Level 3 Health & Social Care courses (A-Level and BTEC).



English Language

Qualification

GCSE (WJEC)

Level

1 & 2

Unit 1: 2 x Speaking and Listening Controlled tasks:

Task 1 (10%) – Individual researched Presentation (40 marks)

One individual, researched presentation, which may include responses to questions and feedback, based on WJEC set themes.

Task 2 (10%) – Responding and interacting (40marks)

One group discussion to written and/or visual stimuli provided by the WJEC to initiate the discussion.

Unit 2 – 2 hour written examination (40%)

Reading and writing: Description, Narration and Exposition

Section A (20%) – Reading (40 marks) Understanding at least 1 description, one narration and one exposition text, including continuous and non-continuous texts, assess through a range of structured questions

Section B (20%) – Writing (40 marks) One writing task to be selected from a choice of two that could be either descriptive, narrative or exposition. The section will also include one proofreading task focusing on writing accuracy.

Reading and Writing: Persuasion, Argumentation, Instructional

Section A (20%) – Reading 40 Marks Understanding at least one argumentation, one persuasion and one instructional text, including continuous and non-continuous texts, assessed through a range of structured questions.

Section B (20%) – writing (40 marks)

One compulsory argumentation writing task and one compulsory persuasive writing task.

Half the marks for both writing sections will be awarded for communication and organization (meaning, purpose, readers and structure) and the other for writing accuracy (language, grammar, punctuation and spelling).

For Further Information Contact:
Miss L. Banks



ASSESSMENT

**Unit 1
(20%)**

Non
Examined
Assessment

**Unit 2
(40%)**

Examination
2 hours

**Unit 3
(40%)**

Examination
2 hours

LEARNING PATHWAY

This course is essential for any student wishing to study further in school, College or University.

This course will lead into A Level English Language or Literature.



English Literature

Qualification

GCSE (WJEC)

Level

1 & 2

Unit 1: 2 Hour Examination

Prose (different cultures) and poetry (contemporary)

Section A requires study of the prose text 'Of Mice and Men' by John Steinbeck. Section B will require candidates to explore, respond to, and compare two contemporary unseen poems.

Unit 2: 2 Hour Examination

Literary heritage drama and contemporary prose

This paper requires study of a drama text from the English/Irish/Welsh literacy heritage and a contemporary prose text.

At St Martin's, we study 'An Inspector Calls' by J B Priestly and 'Heroes' by Robert Cormier.

Unit 3: 2 x 2 hour controlled tasks

Poetry and Drama (literacy heritage) – English/Irish/Welsh literacy heritage

Pupils will complete two controlled tasks; 1 based on a number of thematically linked poetry provided by the WJEC and another on a selection of extracts taken from a Shakespeare play with a thematic focus.

For Further Information Contact:
Miss L. Banks



ASSESSMENT

Unit 1 (35%)	Unit 2 (40%)	Unit 3 (25%)
Examination	Examination	Non Examined Assessment

LEARNING PATHWAY

This course will lead into English Literature and further study at University level for a range of academic courses, such as Law and Journalism.

GCSE (WJEC)

You also get the opportunity to put theory into practice by making a believable media product as part of your controlled assessment. Using Photoshop and photography and video editing, you will make your own film marketing material.

For Further Information Contact:

Mrs R. Jones

Level

1 & 2



ASSESSMENT

UNIT 1 (30%) Y11 Exam

UNIT 2 (30%) Y11 Exam

Adverts, Newspapers, Music Industry, Computer Game Marketing
Film/ TV

UNIT 3 (40%)

Y11 Exam NEA/ Controlled Assessment Project

LEARNING PATHWAY

This course utilises and builds upon skills of literacy, communication and ICT and links effectively with Art, IT and English, also touching on Business Studies and Psychology.

Spanish



Qualification

GCSE (WJEC)

Level

1 & 2

The study of Spanish is naturally an integral part of the European Dimension, equipping the workforce of the future with skills appropriate to the global economy. Spanish is spoken more widely throughout the world than any other continental language and is increasingly important in the USA with over 41 million people of Hispanic origin.

The content that will be studied will cover the following broad contexts:

Identity and Culture

Wales and the World—areas of interest

Current and future study and employment

For Further Information Contact:

Miss S. Rookes /Mr F. Lopez



ASSESSMENT

UNIT 1 (25%) Speaking

UNIT 2 (25%) Listening

UNIT 3 (25%) Reading

UNIT 4 (25%) Writing

LEARNING PATHWAY

This course will lead into A-Level Spanish and university; in the world of business, sport, STEM or education. The new GCSE promotes confidence and skills.



Qualification

GCSE (WJEC)

Level

1 & 2

The WJEC Welsh Second Language Qualification is a natural progression from student studies in Key Stage 3 at St Martin's. The course continues to develop the skills of speaking, listening reading and writing as well as promoting good standards in literacy, communication and working together. GCSE Welsh is a modular course which covers the skill of using Welsh in lots of different situations from formal working environments to more social situations. There are opportunities to discuss current affairs, culture and cultural events and issues that affect young people in today's society. There is an emphasis on developing awareness of Wales and Welsh culture, identity and Welsh in the workplace:

- to develop their interest in Welsh and enthusiasm for the language.
- to develop their confidence when communicating effectively in Welsh
- to develop essential skills while undertaking practical tasks which fulfil the needs
- of candidates, employers and further education
- to develop the skills of candidates to make practical use of the language in order
- to communicate effectively
- to develop the necessary knowledge, understanding and skills for further study.

For Further Information Contact:
Miss S. Rookes

ASSESSMENT

UNIT 1 & 2: Speaking and Listening
UNIT 3: Reading and Writing
UNIT 4: Reading and Writing
2 Tasks(50%); 1 Exam (25%); 1 Exam (25%)

LEARNING PATHWAY

A knowledge of the Welsh language is extremely valuable for all kinds of careers, including Teaching, Nursing, the Civil Service, all clerical posts and those involved with the Media. Understanding Welsh is also a useful social and leisure time asset.

Art



Qualification

GCSE (WJEC)

level

I & 2

Art is anything made by people which expresses an idea or feeling in a skilful way, and Design is the planning of ideas in order to produce the most interesting Artwork!

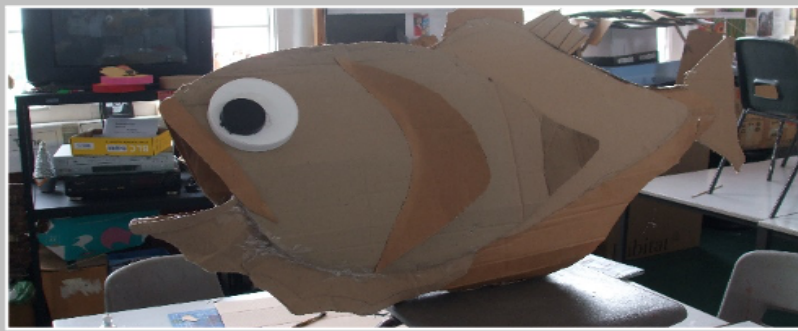
By focusing on a given theme such as 'organic form' we explore what culture means within our own society and the Art forms which are produced by people from different cultural backgrounds.

This research is then combined with new craft skills and media trials to produce original work in most of the following areas:

- Drawing. Painting from observation.
- Fine Print
- Textiles/Fashion
- Graphics. Illustration. Advertising.
- Sculpture. Costume. Jewellery Design.
- Photography
- ICT (Photoshop and IMovie)

A Sketchbook is essential to record on-going work.

For Further Information Contact:
Miss Hopkins/Miss James



ASSESSMENT

**(60%)
Coursework**

**(40%)
Examination
Y11 Assessment**

LEARNING PATHWAY

This course will lead into A-Levels and Art Foundation Courses to pursue a Career in Fine Art, Graphic Design and other creative

Drama



Qualification

GCSE (WJEC)

The WJEC GCSE in Drama is an exciting, inspiring and practical course. The course promotes involvement in and enjoyment of drama, as performers. Additionally, it provides opportunities to attend live theatre performances.

WJEC GCSE Drama will enable you to:

- explore performance texts, understanding their social, cultural and historical context.
- develop a range of theatrical skills and apply them to create performances
- work collaboratively to generate, develop and communicate ideas
- reflect on and evaluate your own work and that of others

You will be given the opportunity to participate in a wide variety of drama activities, including role-play, improvisation and the performance of scripted and devised plays.

For Further Information Contact:
Mrs L. Weston

Level

1 & 2



ASSESSMENT

UNIT 1 (40%)

UNIT 2 (20%)

UNIT 3 (40%)

**Devising Theatre
Performing Theatre
Written Examination**

LEARNING PATHWAY

This course will lead into A-Level Drama along with developing skills to enter a wide range of subjects which require presentations to a wider audience.

Music



Qualification

GCSE (WJEC)

Level

1 & 2

Do you enjoy performing on your own and as part of a group? Would you like to perform and record your own songs? Would you like to learn more about music technology? These are some of the musical skills which this course develops. The course promotes candidates' cultural development, involvement in and enjoyment of music as performers, composers and appraisers.

Practical work will allow you to develop your skills, whether it is as a singer, a guitarist, a drummer, a violinist or as a pianist. Students will be encouraged to take part in ensemble activities outside the classroom and to attend live performances. Students will also become familiar with music of many different styles from different centuries to the modern day through analysis and study. Students will be able to compose their own pieces of music which can then either be recorded live or can be recorded using computer software packages such as Garageband, Sibelius and Cubase.

For Further Information Contact:
Mr O. Lombard



ASSESSMENT

UNIT 1 (35%) Y11 Assessment
UNIT 2 (35%) Y11 Assessment
UNIT 3 (30%) Y11 Examination
Y11 Assessment Performing; Composing;
Appraising

LEARNING PATHWAY

A passion for music can take you far—into the worlds of performance, composition, education and media. In addition, the study of music is highly regarded by Universities and further education establishments because it relies on the mastery of many different disciplines and skills.

The course aims to develop knowledge and understanding of the features and dynamics of business activity. Students will acquire an appreciation of the relationship between business activity and the environment in which it takes place and of the structure, organisation and control of the main forms of business.

The content is presented in six clear and distinct topic areas:

- Business activity
- Influences on business
- Business operations
- Finance
- Marketing
- Human resources

Both units assess content from all six topic areas, so learners will be required to draw together knowledge, skills and understanding from across the subject content in each assessment.

For Further Information Contact:
Mrs K. Joyce



ASSESSMENT

Unit 1: Business World Total Marks: 100
Written Examination 2 hours **(62.5%)**

Unit 2: Business Perceptions Total Marks: 60
Written Examination 1.5 hours **(37.5%)**

LEARNING PATHWAY

This course will lead into A-Level Business Studies along with a springboard for students wishing to become immersed in the entrepreneurial world at a young age.

There is also the opportunity to participate in Young Enterprise and gain experience from setting up and running their own company.



Digital Technology

Qualification

GCSE (WJEC)

Level

1 & 2

This brand new exciting WJEC GCSE qualification in Digital Technology is a broad-based qualification that allows learners to build on the digital skills, knowledge and understanding that is used both in their school and everyday lives.

The qualification will allow learners to develop their understanding of the range of digital technology systems at use in our connected and globalised society.

It will also allow learners to explore the ever-evolving nature of digital technology systems and how these systems can be used productively, creatively and safely

Further Information Contact: **Mr M. Lewis**



ASSESSMENT

Unit 1 - The Digital World

An on-screen assessment related to digital technology systems, the value and perspectives on digital technology.

Unit 2 - Digital Practices (NEA)

Section A candidates will interrogate a supplied data set imported into a spreadsheet in order to inform Section B, where they will create a website incorporating either an animation or a game related to a set context.

Unit 3 - Communicating in the digital world (NEA)

Candidates will create digital assets related to a set context and then formulate an online digital communications campaign around them.

LEARNING PATHWAY

The qualification is designed for learners who wish to begin their journey towards a career that utilises digital technologies or to progress onto advanced level programmes of learning involving digital technologies



Qualification

GCSE (WJEC)

Level

1 & 2

The Welsh Baccalaureate is based on a **Skills Challenge Certificate** alongside **Supporting Qualifications**. The requirements of both the Skills Challenge Certificate and Supporting Qualifications must be met in order to achieve the overarching Welsh Baccalaureate.

The **Skills Challenge Certificate** consists of four components which are followed by all learners:

Global Challenge (15%):

The Global Citizenship Challenge will provide learners with the opportunity to build knowledge and understanding of a global issue selected from one of the following topics: Cultural diversity, Fair Trade, Future energy, Inequality, Living sustainably, Natural and human disasters, Nutrition, Poverty

Community Challenge (15%):

Learners will have an opportunity to develop an understanding of how carrying out a community activity is beneficial to themselves. The activity will help to promote a sense of self-worth, self-esteem and self-confidence, along with the development of individual and/or team working skills. The Community Challenge will provide learners with the opportunity to select an activity from one of the following community themes:

- Social/welfare
- Neighbourhood enhancement
- Coaching

Enterprise and Employability Challenge (20%):

The Enterprise and Employability Challenge provides learners with an opportunity to develop important team working skills. Learners will be able to recognise the contributions they can make when collaborating with their peers, business advisors and potential customers in developing a business concept.

Individual Project Challenge (50%):

The purpose of the Individual Project is to develop learners' skills, through carrying out a research activity in an area of personal interest or one that reflects future educational or career aspirations.

During the Individual Project learners will explicitly develop skills in **Digital Literacy, Planning and Organisation and Critical Thinking and Problem Solving** and apply them in an appropriate manner.

For Further Information Contact:
Mr M Lewis



ASSESSMENT

Global Challenge (15%)
Y10 Controlled Assessment
Community Challenge (15%)
Y10 Controlled Assessment
Enterprise and
Employability Challenge (20%)
Y10 Controlled Assessment
Individual Project Challenge
(50%)
Y11 Controlled Assessment

Welsh Bac

SPORT



Qualification

IVQ (EdExcel)

Level

1 & 2

Unit 1: Sports Campaigning – internally assessed assignment

Through this unit learners gain an understanding of how different sports are governed and the issues faced by sports.

Unit 2: Improving Sporting Performance

It is through this unit that learners gain knowledge and understanding of working with sports people and how to get the best out of them.

Details of each external assessment are as follows:

- An assignment will be produced each academic year and cannot be opened before May 1st each year
- It is a **six** hour timed, supervised assessment

Unit 3: Fitness for Sport – internally assessed assignment

Learners gain knowledge and understanding of key scientific concepts relating to the function of the human body. They learn about different techniques which are used to develop fitness and how they affect body systems.

For Further Information Contact:

Mr M. Faulds



ASSESSMENT

UNIT 1 (30%)

UNIT 2 (30%)

Examination

Examination

UNIT 2 (40%)

Practical

LEARNING PATHWAY

You will gain sufficient knowledge and understanding needed to progress to the more demanding BTEC in Sport and AS Physical Education.



Qualification

GCSE (PE)

Level

2

2.1 Unit 1: Introduction to physical education

The subject content focuses on five key areas:

1. Health, training and exercise
2. Exercise physiology
3. Movement analysis
4. Psychology of sport and physical activity
5. Socio-cultural issues in sport and physical activity.

2.2 Unit 2: The active participant in physical education

Learners will be assessed in:

three different activities in the role of performer (no coach or ref/umpire). **one** individual and **one** team sport and **one** other from the approved lists of activities.

a personal fitness programme linked to the chosen **major** activity.

For Further Information Contact:

Mr M. Faulds



ASSESSMENT

UNIT 1 (50%) 100 marks

UNIT 2 (50%) 100 marks

Y11 Examination

Y11 Assessment

2 Hour Exam

Practical Activities

LEARNING PATHWAY

You will gain sufficient knowledge and understanding needed to progress to the more demanding BTEC in Sport and AS Physical Education.

History



Qualification

GCSE (WJEC)

Level

2

At St Martin's we have chosen to follow the GCSE History course set by the Welsh Joint Education Committee (WJEC).

We will be studying 4 topics over two years:

- Depression, War and Recovery 1930-1951;
- The United States of America: A Nation of Contrasts 1910-1929;
- Crime and Punishment c.1500 to the present day
- Working as an Historian –non-examined assessment.

G.C.S.E. History will mean the learning of a wide range of new skills using historical evidence and understanding. Pupils will study with a critical eye evidence such as news items, cartoons, statistical and parliamentary reports. They will be made constantly aware of the importance in History of ideas; of the force of change but also the significance of continuity from one age to another, of the inter-relation of cause and consequence, and the importance and the understanding of motivation.

For Further Information Contact:
Mrs S. Palmer



ASSESSMENT

UNIT 1 (25%) Y10 Assessment
UNIT 2 (25%) Y11 Assessment
UNIT 3 (30%) Y11 Examination
UNIT 4 (20%) Non examined assessment

LEARNING PATHWAY

This course will lead into A-History and provide a humanity qualification that is viewed very highly by further education establishments and employers.



Qualification

GCSE (WJEC)

Level

1 & 2

Pupils who study either Full Course or Short Course Religious Studies will focus on two religions – Christianity and Buddhism. There is no course work with this entirely examination based subject.
Unit 1

Part A Core Beliefs and Practices:

Belief in God and Jesus.
Morality and the Church.
The Buddha and his teachings.
Meditation and festivals.

Part B Ethical Themes:

Issues of Life and death.
Issues of Good and Evil.
Unit 2

Part A Core Beliefs and Practices

The Bible and the afterlife.
The Three Marks of Existence and The Three Jewels.
Life's journey and special places.

Part B Ethical Themes

Issues of Relationships.
Issues of Human Rights.
Learning activities will include reflection, written notes and investigations using artefacts, audio and video material as well as the internet.

For Further Information Contact:

Mr J. Jowett



ASSESSMENT

UNIT A (50%) Y10 Examination

UNIT B (50%) Y11 Examination

LEARNING PATHWAY

Religious Education naturally leads to A-Level RE and this course also develops skills that support other areas of study such as Sociology.

Geography



Qualification

GCSE (WJEC)

Level

2

Broadly, the aim of Geography is the description and explanation of everything that is happening on the Earth's surface. But Geography is so much more – geographical ideas, concepts and themes are changing rapidly to respond to the contemporary issues facing our world. Fieldwork is an essential part of this qualification.

Unit 1 -Physical and Human Landscapes

- Landscapes and physical processes (rivers and coasts)
- Rural-Urban Links
- Tectonic Landscapes and Hazards

Unit 2 – Environmental and Development Issues

- Weather, climate and ecosystems
- Global development and resource issues
- Environmental challenges

Unit 3 – FIELDWORK

- 2 days fieldwork – Physical and Human Geography
- Non-Examined assessment

For Further Information Contact:
Mr J. Jowett



ASSESSMENT

UNIT 1 (40%)

Y10 Examination

UNIT 2 (40%)

Y11 Examination


UNIT 3 (20%)

Y11 Assessment

LEARNING PATHWAY

This course will lead into A-Levels and Geography as well as further study at University. A humanity subject provides a wider study for those who wish to keep their options open.



Qualification	GCSE (WJEC)	Level	1 & 2
<p>We have chosen to follow the Edexcel GCSE Psychology course. We will be studying the following compulsory topics over three years: Development, Memory, Psychological problems, Brain and neuropsychology, Social Influence and Research Methods.</p> <p>We also have a choice of a further 2 topics to study from the following: Criminal Psychology, The Self, Perception, Sleep and Dreaming and Language, Thought and Communication.</p> <p>Students will gain knowledge and understanding of key features of the following core areas of psychology through the study of the compulsory and optional topics in this specification. Students will also gain knowledge and understanding of:</p> <ul style="list-style-type: none"> • debates in psychology, including 'reductionism/holism' and 'nature/nurture' • how psychological knowledge and ideas change over time and how they inform our understanding of behaviour • the contribution of psychology to an understanding of individual, social and cultural diversity • the interrelationships of the core areas of psychology • how the studies for topics relate to the associated theory • research methods. <p>For Further Information Contact: Mrs L Jolliffe</p>			
			
<p><u>ASSESSMENT</u></p> <p>Paper 1 (55%) Yr11 Examination Paper 2 (45%) Yr11 Examination</p>			
<p><u>LEARNING PATHWAY</u></p> <p>This course will lead into A Level Psychology and provide a qualification with a range of skills that will be useful for a number of different further education opportunities.</p>			

Option Block 1	Option Block 2	Option Block 3
Art (FT)	Art	Business Studies
Catering	Business Studies	Drama
Digital Technology	Catering	Geography
Geography (FT)	Electronics	Health & Social Care
History (FT)	Media Studies	History
Spanish	PE	Music
		Psychology