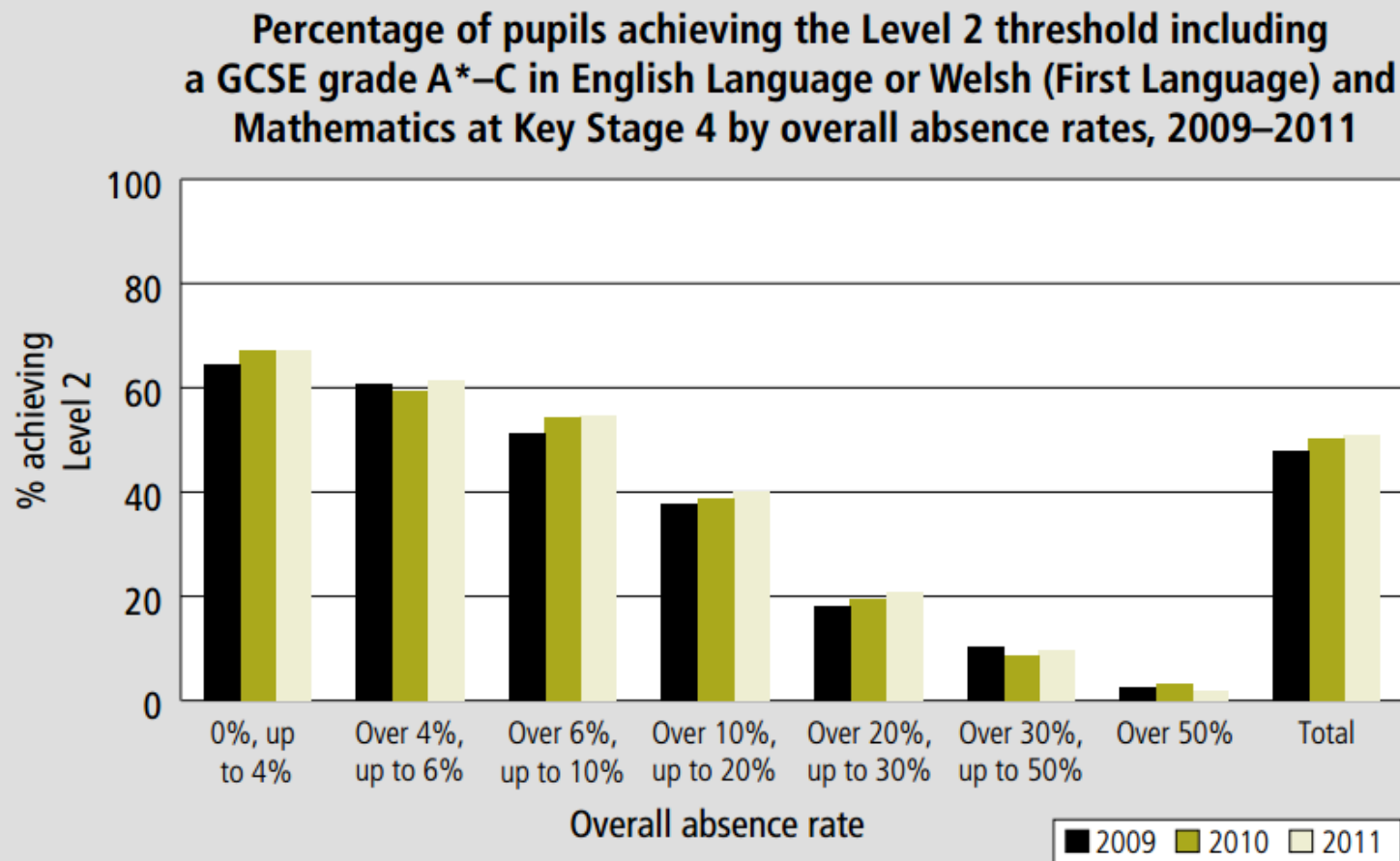


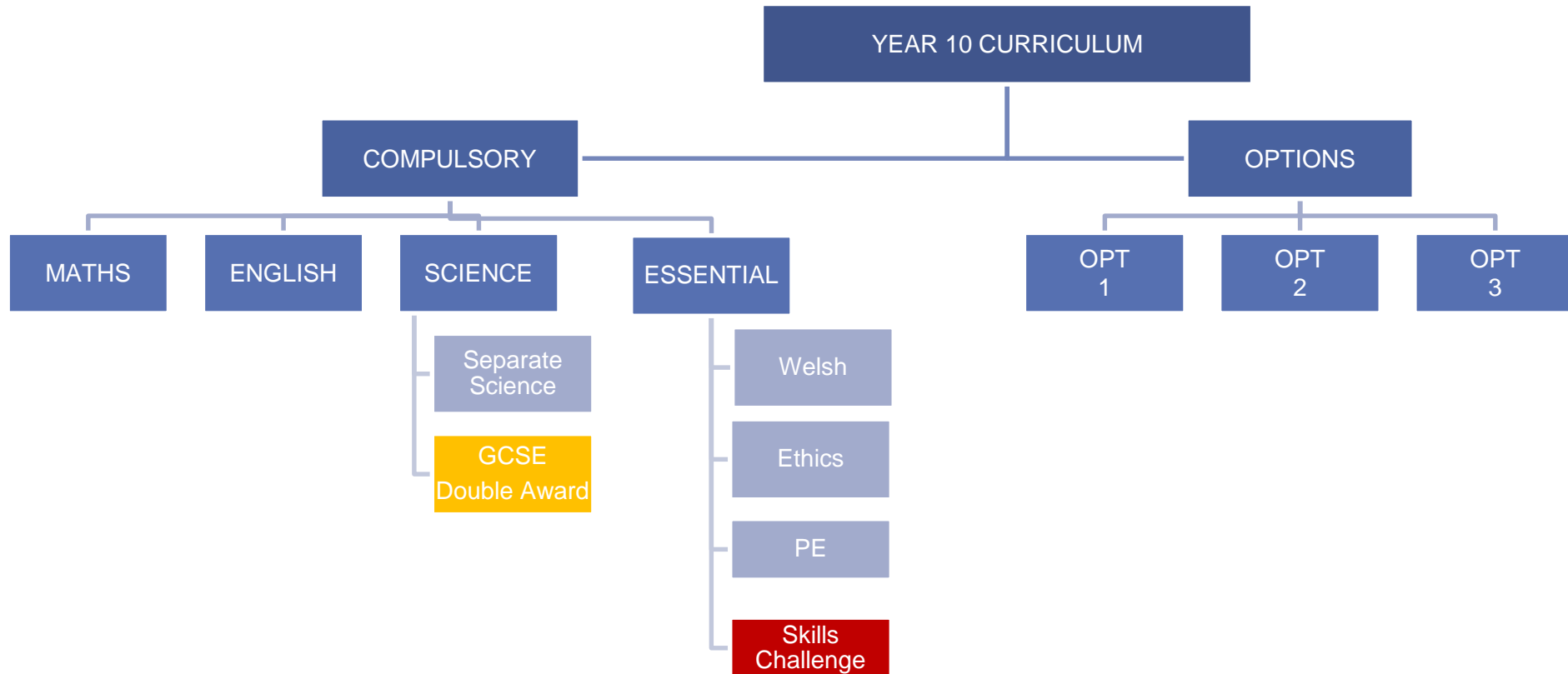
# Options Information Evening 2017

St. Martin's School

# Current Progress



# COMPULSORY & OPTIONAL SUBJECTS



# Free Choice Survey – Stage 1

Pathway	KS3 Levels	GCSE Est	Current Subject Offer					
3	6/7/8	A*/A/B	Chemistry	Biology	Physics	French	Psychology	Computing
			Art	Business	Law	Catering	Music	
			PE	Drama	DT	Geography	Media	RE
					Electronics	History	ICT	Spanish
					Health & Social Care			
2	5/6	B/C/D	Catering	Business	DT	Geography	Media	RE
			PE	Drama	Electronics	History	ICT	Spanish
			Sport	Health & Social Care	Law	Art	Music	
1	3/4	D/E/F	Catering	Business	DT	Geography	Media	RE
			PE	Drama	Electronics	History	ICT	Sport
			Health & Social Care	Music	Alternative Provision			Art

5. Select you first choice option subject.

6. Select you first second option subject.

7. Select you first third option subject.

8. Is there another subject not listed you wish to choose?

<https://www.surveymonkey.co.uk/r/FWVVRGJG>

# Response to Survey Questions

## Year 9 Response to Student Open Survey 2016

**Q: Do the levels affect the subjects you want to take?**

A: Yes, depending on your current levels will determine the most suitable subjects for Year 10 and Year 11. Most subjects cover all students; however the colour coded diagram in the survey shows suitable learning pathways.

**Q: Is Criminology an option? What is the subject media about?**

A: Criminology is not an option at the moment, if there is demand for a subject we do put on additional subjects, for example Psychology in 2015. The options evening will give you an opportunity to look at subjects and meet staff. You will need to find Mrs Jones in the Media room.

**Q: Do I have to do long Welsh course?**

A: All students will study 3 hours of Welsh in Key Stage Four. Most classes will take full course Welsh.

**Q: How will the GCSE classes be set up? What if I cannot take an option for any reason? What if a subject that I want to do doesn't run which would then affect my career? Can I change my options after I've chosen them?**

A: GCSE classes in the core subjects are set based on the levels achieved at the end of Year 9. Options subjects are mixed ability as a result of individual selection. Option subjects will run if there is demand for the subject in a specific option block. The class average for KS4 subjects is 23 students (in 2014/15).

If a subject does not run because of low numbers then the closest match will need to be sought and a review of your pathway can be undertaken.

Once the confirmation of the subjects is made to parents, your options are fixed. This can be changed anytime up until September 1<sup>st</sup> as long as there is space in a class. In September, we always run a two week reflection period where there is flexibility to move subject; again there must be space in the new class.

**Q: Are the option choices the only subjects we will be studying alongside the default**

# Option Block Stage 2

## Year 9 Options 2016

The option blocks have been arranged as a result of over 100 students completing the free choice survey. There is no guarantee of a subject running until all students have made a selection from the option blocks.

There will be seven classes in each block and I have arranged the subjects to meet the demands of the majority of learners. In a few cases, two subjects have been placed into a slot where numbers are very close and from the same department, only one subject will run.

When all students have made a selection I will meet individuals and groups of learners to explore and finalise options. This will then be communicated to Parents/ Carers.

Compulsory	Option 1	Option 2	Option 3
<b>Maths</b>	Business VGCSE	Art GCSE	Art GCSE
<b>English</b>	Geography GCSE	Geography or Geology GCSE	Health & SC or DT GCSE
<b>Science</b>	Electronics GCSE	PE (1) GCSE	Drama GCSE
<b>Skills Challenge</b>	Media GCSE	PE (2) BTEC	Law GCSE
<b>PE</b>	Psychology GCSE	History GCSE	Separate Science GCSE
<b>RE/Welsh</b>	Spanish GCSE	Catering GCSE	ICT or Computing GCSE
	Music GCSE	Separate Science GCSE	Spanish GCSE

Please indicate your selection.

CHOICE			
--------	--	--	--

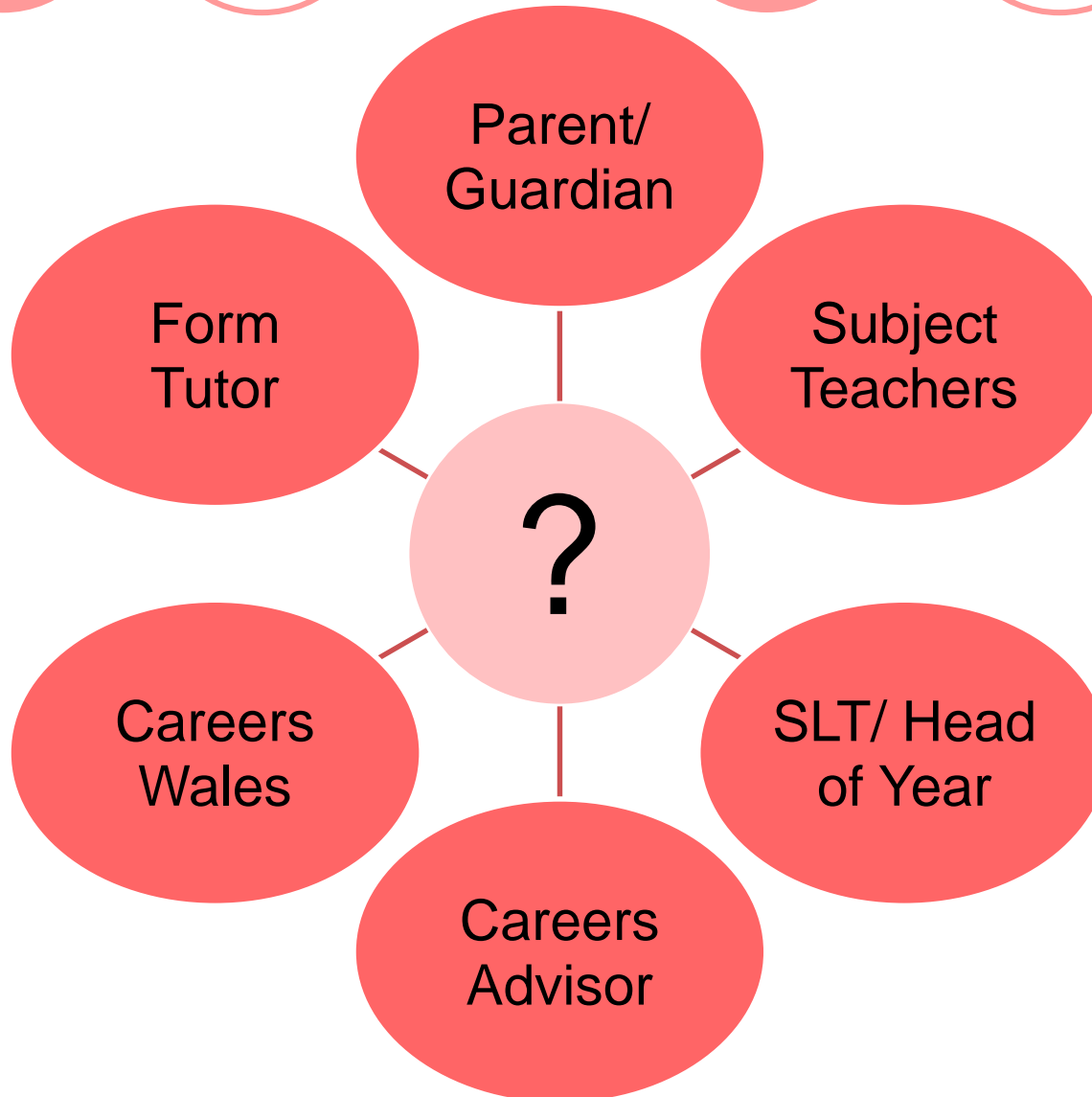
I wanted to take (as my first choice):

SUBJECT:

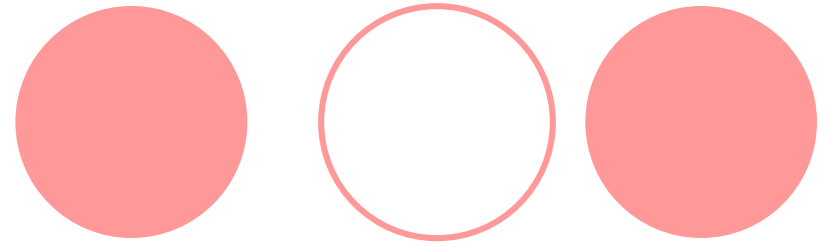
OPTION:

**Deadline 9<sup>th</sup> March 2015 (Main Reception)**

# Who Can Help.....



# Closing Thoughts



- How is it decided if a subject will run in a block?
  - Classes are determined by the number of students selecting a subject.
- Advice for Students
  - WORK BACKWARDS > Identify Your Learning Pathway
    - Which job do you want and what qualifications do you need?
  - Research each subject carefully by asking questions –
    - What do you actually do in Lessons?
    - How is the course assessed?
    - What is my current Level? What is my potential grade at GCSE?



# OPTION PROCESS TIMESCALE

Time	Event
January	Open Choice Selection (1)
January	Y9 Open Evening
February	Full Option Blocks Published (2)
March	Final Option Selection
March	Student Options Review – Course Suitability
April	Confirmation of Options

<https://www.surveymonkey.co.uk/r/FWVRGJG>